

Zeta Phi Beta Sorority, Inc.

GREAT LAKES

ILLINOIS • INDIANA • KENTUCKY

The Official Newsletter of the Great Lakes Region

GAZETTE

MICHIGAN • MINNESOTA • OHIO • WISCONSIN



Mary Breaux Wright
24th International Grand Basileus

Michelle Porter Norman
23rd Great Lakes Regional Director



The Magnificent Boulé and a New Grand

by Soror Chauntine J. Dorame

**EXTRA, EXTRA!
READ ALL ABOUT IT!**
ZETA members from around the world elect a new International Grand Basileus and Executive Board, and five (5) elected board members hail from the Great Lakes Region!

ZETAS from around the world converged in Chicago from July 6th – 10th for the biennial Boulé meeting. Great Lakes Regional Sorors were abuzz with excitement because Chicago had not hosted a Boulé since 1968!

Pulling up to the Hilton on Michigan Avenue was a deed unto itself as cars and taxis were

trying to navigate pick-ups and drop-offs. After finally parking the car, I came into the hotel and was greeted by the President of Phi Beta Sigma, Bro. Jimmy



Hotel picture courtesy of www.Hilton.com/Chicago

Hammock. Walking around the corner, I was met by a sea of blue. How wonderful it was to see hundreds of ZETA's buzzing around the hotel!

As I proceeded through the conference center, I encountered more friendly faces and truly felt the spirit of this great sisterhood as I was directed to the conference registration area where I met up with some of my chapter Sorors. Before my Sorors and I could make any plans, members of the National Executive Board swept through the area on their way to the official Boulé opening;

the conference had begun with the opening program to be hosted by Phi Beta Sigma Bro. Warren Ballentine, Esq., national syndicated radio show host and attorney.

On Friday the sixth, upon entering the meeting room where the opening session was being held the women of Zeta Phi Beta were presented with a rose and serenaded by the men of Kappa



Newly elected International Grand Basileus Wright reciting the oath.

Alpha Psi singing their sweet-heart song followed by a representative from each of the "Divine Nine" organizations bringing warm greetings.

Story continued on page 2...

Regional Director Greetings

To GOD be the Glory!

It is with great pride and honor to greet you as the 23rd Great Lakes Regional Director. I am humbled that our International Grand Basileus, Mary Breaux Wright appointed me to lead this GREAT region.

"Building on the Principles of Zeta While Blazing New Paths" is the theme for this administration and by working together we will succeed in all that we do in the name of ZETA. As the Regional Director, my 3 major goals are:

- * To uphold the principles of Zeta Phi Beta Sorority, Inc.
- * Promote and execute the vision & programs of our 24th International Grand Basileus, Mary Breaux Wright throughout the Great Lakes Region &
- * Represent the interests of the Sorors & Auxiliaries of the Great Lakes Region.

To this end, I implore each of you to continue your work of Service in our communities, provide scholarship

opportunities for those in need, be a support for one another & represent the best ZETA has to offer at all times. Our image of finer women and our service in the world is what attracts others to want to join our prestigious organization.

I would like to take this opportunity to thank you for your prayers, cards, flowers, plants, calls, emails, texts & gifts as I experienced medical challenges this fall. The support of my family, my Church family and the sorority remains a pillar of strength

that helped me through the many obstacles.

Words can never express my gratitude for your love and support. May God bless you as God continues to bless me!

As always, it is truly my pleasure to serve ZETA for the love of ZETA!

HAPPY HOLIDAYS!



Building on the Principles of Zeta While Blazing New Paths

Magnificent Boulé con't

This session culminated with new members of the ZETA Doves being pinned and the ZETA Choir performing with multi-Grammy nominated Gospel Singer, Ann Nesby.

Saturday the seventh was a day filled with business meetings. The night was all amusement

brought the house down on this day full of the spirit of worship.

The night, still young was not over as a "Meet the Candidate" reception and Old School/New School Party & Stroll Competition took place after the banquet.

Basileus Underwood hosted the Grand Finale event and gave all of us an impromptu and hilarious stand-up routine. Young, middle and older ZETA members attended this event to enjoy the stylings of Grammy-nominated artist Ledisi and 70's/80's super-group Lakeside.



The six (6) Past International Grand Basileus and the new International Grand Basileus

as we witnessed the Ms. Zeta Phi Beta Sorority Pageant.

Sunday the eighth was the busiest day as the Necrology/Rededication Ceremony was performed, the Interfaith Breakfast was held, the Leadership Workshops and Third Business Session occurred and Election Caucuses took place.

After a break, we were right back to Zeta's work at night with the Night of the Performing Arts: Health Justice/Z-HOPE/and the Distinguished Pearl Chapter-Auxiliary Award Banquet hosted by Chicago News Anchor, Art Norman and Past International Grand Basileus, Dr. Barbara West



Past Grand Basileus Carpenter with Art Norman.

Carpenter. Chicago's own world-famous Pilgrim Baptist Church Choir came and

What a sight to see as all the Regional Directors strolled across the stage to "She's a bad mama jama" and to witness a past Grand Basileus and members of the National Executive



ZETA Sorors and a Phi Beta Sigma Brother take time for a photo opp.

Board do "The Wobble" line dance was truly an enjoyable sight.

On Monday the ninth at 6AM, we were right back in the mix because it was time to vote! No time to rest or waste as another workshop and business session was held with election results provided and the session officially closed in preparation for the Grand Finale' event. Past Grand

Tuesday the tenth was the last day of the conference and we were in for a treat with all of the surviving Past National Presidents in attendance to witness our new International President and Executive Board being sworn in. What a special feeling it was to watch our new Grand Basileus be escorted to the stage by the President of Phi Beta Sigma, be pinned with the Presidential Pin and awarded the official leadership gavel.

The 2012 Grand Boulé conference in Chicago was awesome, ending in a truly Magnificent Way!



ZETA Doves preparing to receive their pins.

What will the 2014 Boulé in Washington, D.C. and the 2016 Boulé in Orlando, Florida bring? You will have to be there to witness it for yourself.

Candid Boulé Photos



Ms. Zeta Soror Whitney Alexander, 2012 Ms. Zeta
Photo courtesy of www.adamirongazette.org



Introducing International Grand Basileus, Mary Breaux Wright

The journey for Zeta Phi Beta's 24th International President began at the historical, Louisiana school Grambling State University, in 1969 through the Psi Beta Chapter. After graduation, her travels included being a member of the Nu Epsilon Zeta Chapter in Lafayette, Louisiana where she became a life member and receiving a certification in Business Education from the University of Louisiana-Lafayette (formerly the University of Southwestern Louisiana). Currently, Grand Basileus Wright is a member of Lambda Zeta in Houston, Texas.



Photo courtesy of Twitter.com/
@WrightforGrand

Before her election as International President in July, Soror Wright served as the National First Vice-President, National Director of Protocol and Na-

tional Observances, Chair of the Regional Directors, Southern Regional Director, National State Director Coordinator, Louisiana State Director, researcher and typist on "*Torchbearers of a Legacy: A History of Zeta Phi Beta Sorority, Inc., 1920-1997*". It was through this venture that Soror Wright worked with her Zeta

dent, 1st Vice-President, Secretary, and Chairman of various committees.

Professionally, President Wright has recently retired from her position as Assistant Director of Development at the Duchesne Academy of Sacred Heart in Houston, Texas.



Top row, l to r: 21st Grand Dr. Barbara West Carpenter, 12th Grand Dr. Lullelia Harrison, Director of Protocol (at the time), now 24th Grand Mary Wright.

Front row, l to r: 19th Grand Dr. Eunice Thomas, 14th Grand Dr. Deborah Wolfe, 16th Grand Isabel Herson, 18th Grand Dr. Edith Francis and 20th Grand Jylla Moore Tearte

Photo courtesy of Ebony Magazine, October 1998

mentor, 12th International President, Dr. Lullelia Walker Harrison. I am sure that Soror Wright's motto – *A good Zeta is a well-informed Zeta* was forged by this partnership. Soror Wright has also held many positions on the local level including, Presi-

She is also a retired business teacher. Personally, President Wright is married to Phi Beta Sigma Brother James Wright, mother to Phi Beta Sigma Brother Randall Wright, M.D and grandmother to two grandsons.



Soror Mary Breaux Wright

Photo courtesy of zphib1920.org

"We don't need spectators. We need participants!"
~ Soror Mary B. Wright

Special Great Lakes historical point of interest...
In 1939, Zeta Phi Beta Sorority, Inc. was again incorporated as a non-profit, charitable organization, according to the laws of the State of Illinois and an agent was appointed as the official overseer of Sorority properties.



Editor's Nook - Soror Chauntine J. Dorame

Greetings all, my name is Soror Chauntine J. Dorame and I am the Great Lakes Regional Newsletter Editor. I along with my team, Sorors Chantel Woodridge and Charise Bennett, would like to welcome you to the first edition of the Great Lakes Gazette! We and

our dynamic Great Lakes Regional Director, Michelle Porter-Norman look forward to bringing this region and beyond a spectacular and informative periodical.

The Great Lakes region is truly a powerhouse in Zetadom and we want to feature all of the wonderful work that we do so

tirelessly. Please know that this newsletter is for **OUR** voices.

We welcome submissions of art work, poems, articles, photos and etc. However, do note that any submission becomes the property of the regional newsletter. Feel free to send submissions to:
glnewsletter@gmail.com.

Recruitment & Retention

LET'S DO MORE!

**MEMBERSHIP FOCUS MONTH
OCTOBER 2012**



Building on the Principles of Zeta While Blazing New Paths

LET'S DO MORE - MEMBERSHIP FOCUS MONTH

As we move towards the sorority's Centennial Celebration of 100 years of service in 2020, the membership growth of Zeta Phi Beta Sorority needs to reflect this phenomenal milestone in the sorority's history and Zeta's light will continue to shine.

We need to begin now in moving our membership growth to unprecedented numbers. Therefore, **"Let's Do More"** in our recruitment of new members and in the retention of our current membership. While this is not a formal reclamation period, **"Let's Do More"** by inviting all inactive members to *come back to Zeta* during this current period of financial reporting.

During the International Grand Basileus' initial retreat with the Regional Directors in August 2012, the **"Let's Do More"** campaign was presented, by the National First Anti-Basileus, to aim a collective spotlight and focus on increasing Zeta's active, financial membership to the highest levels in the sorority's recent history.

Please note some of the suggested membership growth strategies/activities. While these are not inclusive, it is hoped they will provide the impetus for conversation and subsequent follow-through on increasing your chapter, state, and region's membership growth.

- *Suggested Membership Growth Strategies/Activities*

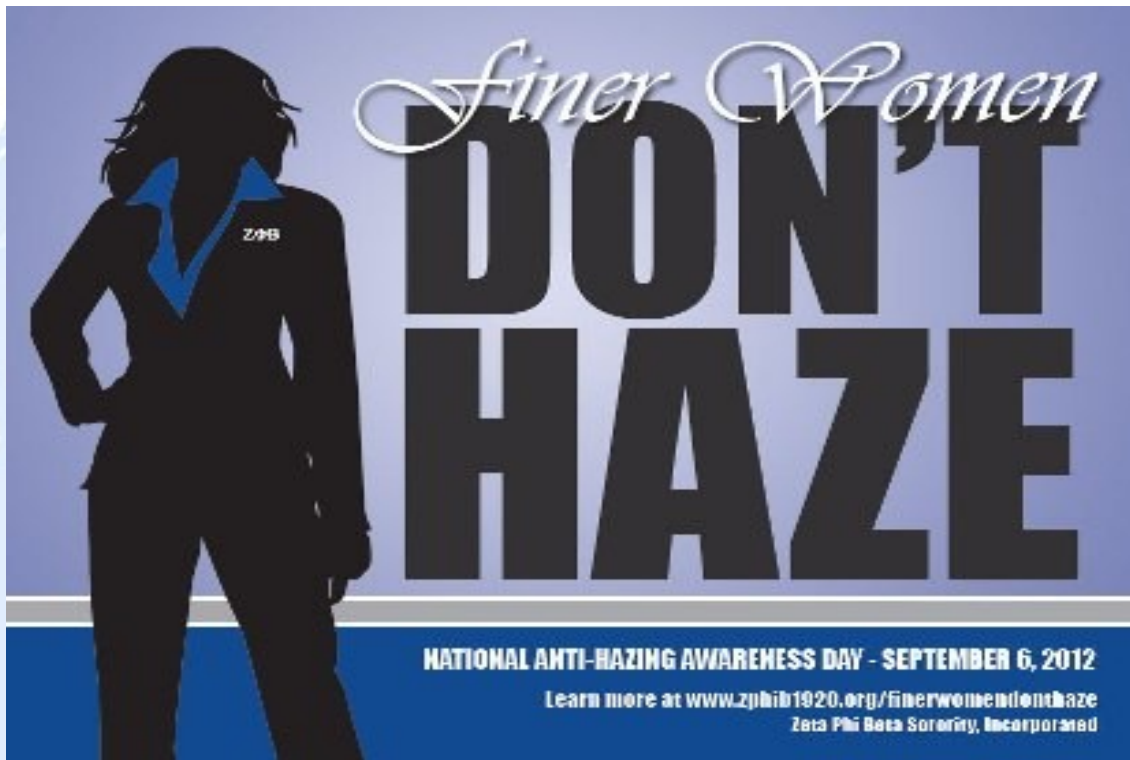
- Be enthusiastic and **"fired-up"** about membership growth. Increase your local chapter's overall membership growth by 25% over the 2011-12 numbers in your recruiting, retaining, and by reaching out to inactive Sorors now for this financial reporting period!
- Design a membership plan for your chapter that focuses on the goals for retaining the current members, follows the current MIP to recruit new members, and includes goals for reclaiming inactive members. The regions and states are encouraged to do the same, as they are currently in competition for national recognition. In your plans, include strategies for monitoring and adjusting your plan as needed.

- Identify a Soror or appoint a Membership Committee with “personality plus and dress for success Sorors,” who exhibit great PR and communication skills to implement and promote your chapter’s membership plan.
- Reach out to inactive Sorors and invite them to *come back to Zeta* **this month** by asking them to submit their regular dues before the official end of our reporting period which is October 31, 2012.
- After October 31, 2012, late fees will be applied. Check to see if there are Zetas who have moved into your area from another region or state and invite them to join you.
- Begin the current MIP and observe prospective members who would offer outstanding contributions to your local chapter and Zeta as a whole. Again, check to see who has moved into your area through relocation, active military duty or military discharge. Also, do not forget those elected officials or college/university professors, etc. who have never affiliated with a Greek letter organization.
- At each chapter meeting, devote some time to discuss your membership plan and to get feedback on how it is working. Become reflective listeners and hear what is really being said by the members of the chapter with regards to attracting others to your chapter. Remember, you can always adjust your plan for increased effectiveness.
- Each month, beginning in October, the goal is to have new membership numbers posted by regions and states on the National First Anti-Basileus’ page under the Members Only Section of our national website. Members will be able to view where we stand in our overall new membership growth.
- If needed, please feel free to contact your State Director to schedule and arrange MIP certification training. Only the current National First Anti-Basileus, Regional Directors, and State Directors will conduct the MIP certification training. Please follow the MIP Reporting Procedures found in the new members kits/packets.
- Let your membership efforts be **ONGOING!**
- Send pictures and effective membership strategies by your chapter to me at the following contact information:

Soror Scarlet H. Black
National First Anti-Basileus
5000 Old Buncombe Road, Suite 27-Box 5
Greenville, South Carolina 29617
sblackfirstanti@aol.com



Some of these strategies will be posted and shared with chapters around the country through the National First Anti-Basileus’ page under the Members Only Section. There are many chapters doing some extraordinary work with growing Zeta’s membership and we want to share these strategies. Keep working. Have a great membership year and **“LET’S DO MORE!”**



Zeta Phi Beta joins Phi Beta Sigma's coalition to stop hazing

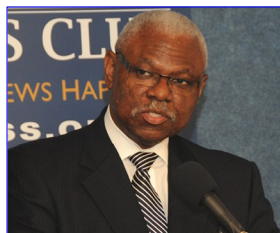
Zeta Phi Beta Sorority, Incorporated has joined Phi Beta Sigma Fraternity and the National Action Network in the fight to eradicate the culture of hazing. "Hazing paralyzes all of us," said Mary B. Wright, International President of Zeta Phi Beta Sorority, Incorporated.

"Our families envision education as a pathway to a brighter future and the enhancement of our family. Our sons and daughters are not pursuing higher education to experience hazing. It is our responsibility as community-service organizations to safeguard the future of our students and the history of our organizations. We stand in solidarity with our brothers of Phi Beta Sigma in this major effort to stop the culture of hazing."

"Institutionalized hazing has had a crippling effect on many lives for many years," said Jimmy Hammock, International Presi-

dent of Phi Beta Sigma Fraternity. "Phi Beta Sigma and Zeta Phi Beta are the only constitutionally-bound, brother-sister Greek-letter organizations, and it makes perfect sense that our two groups are standing together on this critical issue."

Phi Beta Sigma and National Action Network, in May 2012,



Phi Beta Sigma International President, Bro. Jimmy Hammock speaks at the Anti-Hazing Campaign. Photo courtesy of www.phibetasigma1914.org

launched a major anti-hazing campaign designed to eradicate the culture of hazing while preserving the legacy of Greekdom, service organizations and fraternal organizations. The campaign,

LET'S NOT BEAT THE LIFE OUT OF A BEAUTIFUL LEGACY also features a sensitivity training curriculum for Greek-lettered organizations, academic administrations, parents, students, and potential fraternity and sorority members.

"The time is now and Phi Beta Sigma has started a movement to eliminate the culture of hazing," said Jonathan A. Mason, Sr., International First Vice President and task force chairman. "At the end of the day, Sigma's main objective is to put an end to this divisive and destructive culture, which threatens to further decimate not only the African-American community, but also the wider society."

"We stand with our brothers of Phi Beta Sigma in taking the steps necessary to substantially eradicate the culture of hazing and the effects it has on our organizations," says Scarlet H.

Black, National First Vice President of Zeta Phi Beta Sorority, Inc.

"If we can prevent one brother or sister from making an unwise decision to haze and bully, instead of displaying service to humanity or finer womanhood, then our efforts and our living



1st Vice President Scarlet Black with Phi Beta Sigma Brother, Rev. Al Sharpton at the Anti-Hazing Town Meeting on August 11, 2012. Photo courtesy of www.phibetasigma1914.org

will not be in vain. The line in the sand has been drawn and we will work together to make a difference."

*Zeta Phi Beta Sorority, Inc. Leadership
National Executive Board*

*Mary Breaux Wright (S)
24th International Grand Basileus*

National First Anti-Basileus

Scarlet H. Black (SE)

National Second Anti-Basileus

Jacqueline Lemon-Denton (A)

National Third Anti-Basileus

Anjylla Foster (GL)

National Grammateus

Cynthia A. Bell (MW)

National Tamias

Michelle A. Joubert (S)

National Phylacter

Brunhilda C. Williams-Curington (GL)

Chair, National Executive Board

Katy S. Campbell, Esq. (SC)

Chairman, National Trustees

Darneta G. Brown (SC)

National Trustee

Antoinette "Toni" Gordon (MW)

National Trustee

Stephanie L. Dukes-Hunter (SE)

National Trustee

Bettye E. Murchison (E)

National Trustee

Bibiana Boverly (P)

Graduate Member-at-Large

Patricia E. Jones (GL)

Undergraduate Member-at-Large

Alexis Maisonet (A)

Graduate Member to the Exec. Comm.

Dr. Shirley Stansberry (GL)

Undergrad Member to the Exec. Comm.

Marjorie McCowen (E)

Undergrad Rep. Nat. Nominating Comm.

Jessica Holden (GL)

23rd International Grand Basileus

Sheryl Underwood (P)

22nd International Grand Basileus

Barbara C. Moore (SE)

21st International Grand Basileus

Dr. Barbara West Carpenter (S)

Atlantic Regional Director

Janet Y. Bivins, Esq.

Eastern Regional Director

T. Diane Surgeon, Esq.

Great Lakes Regional Director

Michelle Porter Norman

Midwestern Regional Director

Samantha Hughes

Pacific Regional Director

Nui Brown

South Central Regional Director

Dr. Constance Hendricks

Southeastern Regional Director

Dr. Felicia Scott-Strickland

Southern Regional Director

Kay Jones Rosebure

Zeta Phi Beta Sorority, Inc.
National Appointees of the Great Lakes Region

Michelle Porter Norman
23rd Great Lakes Regional Director

Nat'l Director Budget & Finance	Daisy Davis	MI
Nat'l History Team Chair	Norma C. Dartis	IN
Nat'l Life Members' Co-Director	Michele Whitted	MI
Nat'l Amicae Co-Director	Rhonda Eberhardt	OH
Nat'l Legal Council Committee Member	Sherese A. Shabazz, Esq.	IL
Nat'l Z-HOPE Committee Member	Renee Byrd	IL
Nat'l March of Dimes Representative	Latasha Wilson Lane	OH
Nat'l MIP Review/Revision Committee	Linda W. Edwards	IL
Nat'l Budget & Finance Comm. Member	Katherine Joyce Sprowl	IL

The region is truly proud of the significant number of National Appointees from the Great Lakes Region. We congratulate and wish each Soror much success as they serve the sisterhood in their respective appointments.

As always, we are here to assist!

Zeta Phi Beta Sorority, Inc.
Great Lakes Region Leadership Past and Present

Jylla Moore Tearte, Ph.D.
20th International Grand Basileus

Michelle Porter Norman
23rd Great Lakes Regional Director

Patricia E. Jones
Regional Executive Board Chairman

Past Regional Directors

Lizzie G. Miller (KY)	1980-1986 (14th)
Vera M. Paul (IL)	1986-1990 (15th)
Annye P. Roberts (MI)	1990-1992 (16th)
Doris M. Stokes (OH)	1992-1996 (17th)
Norma C. Dartis (IN)	1996-2002 (18th)
Ira J. Ebbs (KY)	2002-2006 (19th)
Daisy L. Davis (MI)	2006-2008 (20th)
Alice F. Craft (IL)	2008-2010 (21st)
Cynthia A. McCoy (IL)	2010 -2012 (22nd)

Current State Directors

Connie V. Pugh	Illinois
Susan D. Johnson, Ph.D.	Indiana
Keisha D. Smith	Kentucky
Elnor B. Taylor	Michigan
Bernadette D. Harrell	Minnesota
LaRita MJ Smith	Ohio
Milika Z. Miller	Wisconsin

Zeta Phi Beta Sorority, Inc. - Great Lakes Region Executive Board

Jylla Moore Tearle, Ph.D.

20th International Grand Basileus

Michelle Porter Norman

23rd Great Lakes Regional Director

Patricia E. Jones

National Graduate Member at Large & Regional Executive Board Chairman

Anjylla Y. Foster
 Brunhilda C. Williams-Curington
 Dr. Shirley Stansberry
 Jessica Holden
 Evelyn Byrdsong
 Karyn Quick
 LaDonna Randle
 Jennifer Wright
 Taniqua Carter
 Tonia Jenkins
 Keesha Jones-Sutton
 Rosalind Walker-Lewis
 Brenda R. Reed
 Linda Edwards
 Carol Boles
 Brenda R. Reed

Nat'l 3rd Anti-Basileus & UG Member at Large
 National Phylacter
 Graduate Member to the Exec. Comm.
 Undergrad Rep. Nat'l Nominating Comm.
 NEF, Board of Managers Member
 Regional Grammateus
 Regional Tamias-Grammateus
 Regional Tamias
 Regional Phylacter
 Regional Epistoleus
 Regional Editor
 Regional Nominating Committee Chair
 Reg. Rep. to the Nat'l Nominating Comm.
 Resident Agent - Illinois
 Resident Agent - Michigan
 Resident Agent - Michigan

Connie V. Pugh/Nicole Weathersby
 Susan D. Johnson, Ph.D./Londra Dufor
 Keisha Smith/Latonda Page
 Elnor B. Taylor/Erica Goldston
 Bernadette Harrell/Charmaine Light
 LaRita MJ Smith/Tamara Manning Gordon
 Milika Miller/Jennine Swafford

Illinois St. Director/Illinois St. Rep.
 Indiana St. Director/Indiana St. Rep.
 Kentucky St. Director/Kentucky St. Rep.
 Michigan St. Director/Michigan St. Rep.
 Minnesota St. Director/Minnesota St. Rep.
 Ohio St. Director/Ohio St. Rep.
 Wisconsin St. Director/Wisconsin St. Rep.

Great Lakes Regional Appointees

Tonia Jenkins	Amenities Coordinator
Renee Byrd	Amicae Coordinator
Trina Murphy	Budget & Finance Chair
Rev. W. Ann Bilbrew	Chaplain
Norma C. Dartis	Historian
Fannie Harrell	Legacy Club Coordinator
Latosha Higgins, Esq.	Legal Counsel
Cheryl A.B. Christie	Life Members' Coordinator
Traci Guinn Buckley, Ed.D.	March of Dimes Representative
Linda Edwards	MIP Review/Revision Committee
Trudy Hale, Ph.D.	National Education Foundation
Mia Johnson	National Partnerships Coordinator
Bobbie Qualls	Necrology/Rededication Coordinator
Chauntine J. Dorame	Newsletter Editor
Kristian Harris	Photographer
Janet Bell	Protocol Chair
Geraldine Peeples	Scholarship Chair
Amber Pratcher	Social Media Coordinator/Web Mistress
Samantha Perry	Stork's Nest Coordinator
Toni Thomas	Undergraduate Advisory Council Coordinator
Carolyn Wadlington	Ways and Means Chair
Ayana Fordham & DeAnna Riley	Youth Co-Coordinators
Edna Metoyer	Zeta Doves Coordinator
TBD	Zeta Male Network
Kimberly Dawson	Z-HOPE Coordinator



March of Dimes National Prematurity Day November 17th, 2012

retardation, developmental delays, chronic lung disease or vision and hearing impairment. Prematurity can happen to anyone, we don't know why it happens in many cases, and that's why the March of Dimes is working so hard on the problem -- to find answers.

Every year, more than 543,000 babies are born premature - that's one in eight babies. Those numbers are worse for African-American babies, who have a one-in-six chance of being born too soon.

Babies born prematurely usually have less developed organs than full-term babies, and are more likely to face serious health problems. Even the best of care cannot always spare a premature baby from lasting disabilities such as cerebral palsy, mental

In response to the significant rise in premature births in the past three decades, the March of Dimes, a national voluntary health agency whose mission is to improve the health of babies by preventing birth defects and infant mortality, and [Zeta Phi Beta Sorority](#), an international organization with chapters in over 850 communities in the United States and abroad, have joined forces in this international campaign to support research into the causes of premature birth, and to educate the public and health care professionals about this escalating health problem.



Please send your Z-HOPE reports to Soror Kim Dawson, Regional Z-HOPE Coordinator at glrzhopecookd@yahoo.com by Dec. 21, 2012.



Anjylla Y. Foster
National 3rd Anti-Basileus

Regional Undergraduate Member at Large

Congratulations



to the Great Lakes Region's newly elected and appointed Undergraduate Representatives:

- *Soror Jessica Horne- Illinois*
- *Soror Angelique Williams- Indiana*
- *Soror Berchanya Marshall- Kentucky*
- *Soror Brittani Jackson- Michigan*
- *Soror Keyana Comer- Minnesota*
- *Soror Clarissa Smith- Ohio*
- *Soror Milia Mims- Wisconsin*

Your Undergraduate Representatives are ready to serve the region! We are diligently working on various initiatives and would like your support. If you have not done so, please join our Facebook group <https://www.facebook.com/groups/237265199640298/> and stay up to date on the Undergraduate chapters of our region.

We are preparing to launch My Sister's Teacher Mentoring Program once again and would love for you to participate. More information about the program are featured on the next few pages of this newsletter.

We're in great need for Graduate Sorors to volunteer to serve as mentors.

UNDERGRADUATES, start getting your best programs and projects together for the 2013 Regional Conference Undergraduate Awards... ***Start saving now!***

Registration & hotel information can be obtained later on the newsletter and from the regional website: www.glrzetas.org. We'll see you in Indianapolis!

If you have any questions, comments, concerns, or suggestions, feel free to email me

Soror Anjylla Foster at greatlakesumal@gmail.com.

Zeta Phi Beta Sorority, Inc. - Great Lakes Regional **“My Sister’s Teacher” Mentoring Program**

Anjylla Y. Foster
National 3rd Anti-Basileus

Jessica Horne
Illinois Undergraduate Member at Large

The mentoring program is a new initiative to help create a stronger sisterly bond between undergraduate and graduate Sorors. The program can be utilized by all Sorors to help bridge the gap between the two. Each Undergraduate or transitioning Soror will be partnered with a graduate Soror to develop and begin the relationship. The goal is to have graduate Sorors help build our legacy one undergraduate Soror at a time.

REQUIREMENTS:

Mentees: (Undergraduate/Transitioning Sorors): **Must have 5 or less years in Zeta**

Mentors: **Must have more than 8 years in Zeta, be financial, have leadership experience on the Graduate, Regional, or National level**

PROGRAM IMPLEMENTATION & REPORTING:

The Program will run from **January 1, 2013 until April 1, 2013.**

Mentee’s and Mentors will have to communicate at least twice a month, preferably via telephone but, if possible face to face. Forming strong bonds and relationships are easier to do when there is direct interaction. Communicating via email and text allows for greater possibility of miscommunication. The purpose of mentoring program is for Graduate Sorors to pass along the knowledge she has gained from experience to Undergraduate Sorors who are traveling down the same path. The mentor becomes an advisor, advocate, role model, and trusted sister to her protégé.

For the mentees, mentoring expands their knowledge of leadership skills, management practices and sisterhood in Zeta. At the end of each month, the mentee and mentor must submit a brief typed journal entry to [Soror Anjylla Foster](mailto:Anjylla.Foster@zeta.org) at greatlakesumal@gmail.com and the chair, [Jessica Horne](mailto:jehorne@siue.edu) at jehorne@siue.edu. When submitting each journal please include the following; **mentee and mentor’s name, chapters, date of the interaction and form of communication used.**

Included in the packet you will find an icebreaker to begin the “*get to know you*” process between Sorors. Also included are sample questions and topics for monthly discussions. Each month’s discussion is formed around various social action events, conferences or National initiatives as it relates to Zeta and/or nationally observed holidays. Keeping in mind that the journal entries should be based upon monthly discussion topics, conversations and interactions should not be limited to such.

At the end of the program, all journal entries and stories will be read to determine which mentee/mentor relationship formed the greatest bond. The partners will share their story and/or a brief speech at the 2013 Regional Conference Undergraduate Luncheon. With all the stories submitted,

a regional journal will be created and sold as a fundraiser to help fund Undergraduates to go to ZOL.

If you would like to participate in this wonderful program, please contact [Soror Jessica Horne](mailto:jehorne@siue.edu) at jehorne@siue.edu. We are also looking for committee members for this and other programs implemented by our National Third Anti-Basileus, [Soror Anjylla Y. Foster](mailto:greatlakesumal@gmail.com). If you or any other Soror are interested in serving please contact Soror Foster at greatlakesumal@gmail.com.

CALENDAR

Monthly Reports: Below are the questions and topics that must be discussed for each month. The first journal should include icebreaker, state conference overview and the month of December topics.

Icebreaker: Both graduate and undergraduate Sorors must answer the first set of questions.

Get to know you (Birthday, Hometown, Major, Career Choice, Family life)

Why did you join Zeta?

How is your relationship with other undergraduate Sorors? Other Graduate Sorors?

Which Principle is most dear to your heart? Why? What does your chapter do for fundraising?

Do you attend Zeta events not sponsored by your chapter, State, or Region ?

What does your chapter do for fundraising?

State Conferences -Final overview

What did you gain?, What would you like to achieve for your state?

How close is your chapter to other chapters within the state?

Questions for Undergrads to answer	Questions for Graduates to answer
How hard is it for undergraduates to remain active and financial within their chapter? What are some challenges that may stand in your way of being active and financial?	What challenges did you face as an Undergraduate/New Member? (Ex. intake, appearance, adjustments made after Zeta.)
What are some of your goals as a Zeta? What resources or steps do you need to achieve these goals?	What is your greatest accomplishment in Zeta thus far?
Do you go out and meet other Sorors that are not in your chapter, State, or Region? Why or Why not?	How do you meet and network with other Sorors? (I.e. events around the city, non-Greek events, chapter meetings etc.)

December:

Does your chapter or family have any traditions for the holiday season? If so, what are they?

Questions for Undergrads to answer	Questions for Graduates to answer
What service project does your chapter typically do for the holiday season? (i.e. Adopt a family, feed the hungry, decorate nursing homes)	How does your chapter serve the community during the holiday season?
What steps does your chapter take to prepare for the next semester?	What advice would you give an undergraduate that is entering into their finals' week? Preparing for graduation?

January: 2013

Share personal New Year's resolution.

Plans for Zeta for the New Year – Transfer, Reclamation, bring in New Members?

What is your chapter planning for Founders' Day?

What are some things your chapter has done in the past for Founder's day?

When does your chapter bring in new members typically?

How is your relationship with our fraternity brothers of Phi Beta Sigma Fraternity Inc.?

What kind of events has your chapter put on with Phi Beta Sigma Fraternity Inc.?

Questions for Undergrads to answer	Questions for Graduates to answer
If you could change one thing about Zeta what would it be?	What is the biggest change you have made since you have been a Zeta?
In what ways does your chapter keep scholarship the number one principle?	How did your chapter ensure they were upholding the scholarship principle? (Study tables, grade checks, tutoring sessions, etc.) What are some ways your chapter helped ensure everyone was keeping their grades up?

February:

Black History Month – How do you personally celebrate?

Does your chapter put on any significant programs for the month?

What does Finer Womanhood mean to you?

Finer Womanhood Observance

Do you or any of your chapter members attend Finer Womanhood Observance events hosted by other chapters?

As Zetas we have to ensure we are dressed and acting Finer at all times. Have you ever been in a situation where a Soror was not upholding this principle? How did you or other Sorors address you/her about the situation?

Questions for Undergrads to answer	Questions for Graduates to answer
Does your chapter utilize the Z-hope manual?	How does your chapter utilize the Z-hope manual?
How does your chapter celebrate Finer Womanhood?	What annual event does your chapter host for a Finer Womanhood Celebration? (Banquet,

March:

Finer Womanhood Observance

Preparation for the regional conference (To do lists, what to expect, what to bring, travel expenses, etc.)

Chapter evaluations and elections

Tips on how to prepare for the next fiscal year.

Discussion of March of Dimes, Stork Nest and Z-Hope events, programs, awards and achievements for the year.

What are your plans for the summer?

April 1st:

Please make sure you have submitted all forms, documents and pictures (if applicable) to be evaluated by the program committee.

Participation Form

Instructions: The Participation form should be typed in MS Word and submitted by December 20, 2012. Both undergraduate and graduate Sorors must complete the form in its entirety to be considered as participants in the program.

Mentor Mentee

Mentee Name (Last) _____ (First) _____

Mentor Name (Last) _____ (First) _____

Permanent Address (City) _____

(State) _____ (Zip) _____

Telephone Number(s) (Home) _____ (Cell) _____

Current Chapter _____ Positions Held _____

Initiation Chapter _____

Initiation Date _____

Regional Positions Held _____

National Positions Held _____

Zeta Goal: _____

Zeta Advice: _____

One word to describe yourself in Zeta: _____

Life Members have a New Plan of Action

by Soror Cheryl A.B. Christie



Life Members of the Great Lakes Region are some of the best and brightest Zeta has to offer!

The Regional Life Members Coordinators have met with Soror Bonita Gillespie, National Life Members Director, and we've established a plan of work which I look forward to sharing with you.

Soror Cheryl A.B. Christie
Reg. Life Members Coordinator
cabc@columbus.rr.com



Our Life Members luncheon at this year's Regional conference will be beneficial to you -- please join us! Sharing ideas, concerns, and best practices is an invaluable resource.

I thank you in advance for your investment of time and talent to our sisterhood, and I'm looking forward to greeting ALL of the Great Lakes Life Members in Indy!

Feel free to call on me at anytime.

STATE LIFE MEMBERS COORDINATORS

<u>State</u>	<u>Coordinator Name</u>	<u>Email</u>
IL	Trina Sherrod	zephi1@yahoo.com
IN	Rosalind Walker-Lewis	rozzpb@aol.com
KY	Bobbie Qualls	quallsbf@aol.com
MI	Trycennia Dean-Motley	deanangelacc@yahoo.com
MN	Vacant	Vacant
OH	Rene Williams	zphinme@yahoo.com
WI	Jennifer Wright	jbw2106@gmail.com

Congratulations Soror Michele Whitted on being appointed as the National Life Members Co-Director!



Amicae - "A Zeta's Best Friend"

I am ecstatic to serve as the newly appointed Great Lakes Regional Amicae Coordinator! I have embraced the challenge to promote our region's Amicae accomplishments and make them shine. Promoting the new theme "Building on the Principles of Zeta while Blazing New Paths", my plan is to uplift the Regional Amicae by:

- Increasing membership with New/Reactivated members
- Increasing Z-HOPE projects by setting a goal a quarter
- Increasing the Grand's initiatives through Education
- Keeping the lines of communication open

- Bridging the Gap between the Amicae & Zetas
- Sorors and Amicae take this opportunity to learn from each other and share successful ideas. I am so happy to serve and I will make a difference! I welcome our new Grand, Soror/Friend Mary Breaux Wright and new Great Lakes Regional Director, Soror/Friend Michelle Porter Norman and I wish them much successes in their first Great Lakes Regional Conference in Indianapolis, IN!

Sisterly,

Renee S. Byrd

Soror/Friend Renee S. Byrd
Great Lakes Regional Amicae Coordinator

Renee S Byrd
Zeta Phi Beta Sorority, Inc.
Great Lakes Regional
Amicae Coordinator
PO BOX 167211
Chicago, IL 60616-7211
rbyrd1920@gmail.com



Great Lakes Regional State Amicae Coordinators

Illinois

Soror/Friend Zenetta Coleman
zmcoleman@msn.com

Indiana

Soror/Friend Sherri Emerson
semerson@ivytech.edu

Kentucky

Soror/Friend Cassandra Grigsby
cassandra1503@insightbb.com

Michigan

Soror/Friend Rosella Campbell
rozellacampbell@yahoo.com

Minnesota

Vacant

Ohio

Soror/Friend Georgette Weatherspoon
jett2005@sbcglobal.net

Wisconsin

Soror/Friend Sharon McGhee-Dailey
ysdailey4@yahoo.com



Zeta Amicae

Highlights for the Upcoming Great Lakes Regional Conference

- Amicae Business Meeting
- News from the Amicae National Co-Director
- Recap of the 2012 GLR Conference
 - New Officers Installed
- Visions for the 2014 GLR Conference

Great Lakes Region Amicae Leadership

Soror/Friend Donnie Faye Hull
National Director of Amicae Affairs

Soror/Friend Rhonda Eberhardt
National Co-Director of Amicae Affairs

Soror/Friend Renee S. Byrd
Great Lakes Regional Amicae Coordinator

Amica Janice L. Brown
Great Lakes Amicae President

Zeta Youth: From A to Z, So Sweet!

by Soror DeAnna Riley

Our illustrious organization is unique because we, as zetas, spend a great deal of energy in developing our youth auxiliaries; and our zeta youth auxiliaries are under our guidance and leadership. It is our duty to assist in transitioning our Auxiliary girls to Zeta pearls.

The youth co-directors goals are to improve our auxiliaries by increasing membership, parental involvement, and participation. We will provide a carefully designed program of activities that will

enhance youth auxiliary members through mind, body, and spirit as they work within school activities and communities to help others. Our auxiliaries are energetic, intelligent, and goal oriented girls who are implementing our sorority principles of "Service, Scholarship, Sisterly Love, and Finer Womanhood."

These girls represent the future leaders of tomorrow!



State of Michigan youth posing with name tags.
All photos courtesy of Deanna Riley



Archonettes at the State of Illinois Conference, Nov. 2012

All photos courtesy of Deanna Riley



Iota Zeta in Indianapolis, IN Youth Auxiliary's Step-Down Scholarship Event



Lambda Rho Zeta in Pontiac, MI Youth coloring place mats at a community thanksgiving dinner

STATE YOUTH COORDINATORS

STATE	NAME	CHAPTER	EMAIL
IL	Jutun King	Xi Mu Zeta	jutun1@aol.com
IN	Susan D. Johnson, Ph.D.	Upsilon Kappa Zeta	instatedirector@yahoo.com
KY	Vacant		
MI	Elnor B. Taylor	Zeta Beta Zeta	mistatedirector@att.net
MN	Vacant		
OH	LaRita MJ Smith	Gamma Zeta Zeta	ohstatedirector@gmail.com
WI	Toya Jenkins-Glenn	Kappa Beta Zeta	Toya1920@sbcglobal.net

Regional Conference: What's in store for the youth?

The Great Lakes Region 79th Annual Leadership Conference is approaching and there are a lot of activities in store for our youth. It is encouraged that you register your youth as they will enjoy various activities such as:

- Youth-centered workshops
- Fine art programs
- Spelling bee/Oratorical contest
- Awards & recognition
- Step/stroll & youth dance

There will be an information packet available for your assistance in preparing for the conference. Be on the lookout for an email from your state youth coordinator.



Sorors Riley and Fordham

GLR Youth Co-Coordinators

Ayanna Fordham
Zeta Beta Zeta - Flint, MI
Zphib4life@yahoo.com

DeAnna Riley
Tau Xi Zeta - Forest Park, IL
sweetanchor6@aol.com



It Can Only Get Better...

Based on the National Zeta Survey, the Great Lakes Region has a total of 20 chapters with youth auxiliaries and 335 youth reported as of November 2012.

State Directors' Retreat: Re-energized in Indy

by Soror Michelle Porter Norman

The **State Directors' Retreat** was held September 13-16 in Indianapolis, IN at the Sheraton Hotel, the site for

Saturday morning, Grand Basileus Wright called in to extend congratulations and best wishes to all of us. She



the 2013 regional conference.

Our weekend was filled with training, brainstorming, contract review/negotiations, hotel site tour, photo shoot, regional executive board meeting conference call & embellishment at its highest form.

All meal functions were held together. Our days started at 7am and

expects **GREAT** things from the **Great Lakes Region**.

We welcomed our National First Anti-Basileus, Soror Scarlet Black who conducted the MIP certification course of training for the State Directors. It was an awesome training and it should be noted that our region was the

in-person training by Soror Black.

Past Regional Directors Norma Dartis and Ira Ebbs attended the conference call board meeting. Also present was Regional Board Chair Patricia Jones, Regional Tamias Jennifer Wright, Indiana State Representative-at-Large Londra Dufor, Regional Web-Mistress/Social Media Chair Amber Pratcher, Regional Photographer Kristian Harris and Regional Recommendations Chair Kimber Monford-Hall.

Director Johnson for providing transportation for all those who traveled by air.

A special thank you to my "rd" Soror Rosalind



Lane-Ragland for always being an awesome traveling companion.

The Leadership Team left INDY with all the tools and strengthened confidence to plan excellent state conferences and lead their respective states to greatness.



ended around 10pm.

only region to have an



Congratulations to Board Chair, Pat Jones for a great board meeting call. Thanks to Sorors Pratcher, Monford-Hall and Indiana State



Great Lakes is a region to be reckoned with.

Did you know?

The Leadership Team consists of the Regional Director and the 7 State Directors

Did you know?

7 of the 8 directors were initiated as Undergraduates



Did you know?

1 is a past Archonette Club President

Did you know?

5 of the 8 are Zeta Legacies and 2 are daughters of past State Directors

Did you know?

5 of the 8 served on the Regional Exec. Board as an elected officer



The Illustrious State of Illinois

by Soror Connie V. Pugh

The 46th Annual Illinois State Leadership Conference was held in Tinley Park, Illinois on November 9th and November 10, 2012.

The conference was the largest conference held in the state of

tance of using the convention and tourist bureau to name a few. The workshops were filled to capacity and attendees garnered useful information.

Past State Directors Barbara Banks-Hayes and Soror Renee S. Byrd passed the gavel to officially

- Omega Pi Zeta Chapter, Evanston, Illinois was chartered Friday, November 9, 2012. It is the first chapter charter within the Great Lakes Region under the leadership of Grand Basileus Mary Breaux Wright's Administration;

- A record 67 Youth attended the leadership conference;

- A record number, 350 attendees, registered for and attended the conference.

Conference Highlights

All the active chapters in the state of Illinois attended the 46th Annual Leadership Conference.

The following individuals were elected to serve on the Illinois State Executive Board:

- Soror Adrienne K. McDay – Chairman of the Executive Board
- Soror Nicole S. Weathersby – Representative-at-Large
- Soror Tiffany Johnson – Grammateus



Illinois State Director, Soror Connie V. Pugh

Soror Felicia Bohanon – Tamias

Soror Angelyn Anderson – Phylacter

Soror Chauntine J. Dorame – Graduate Member-at-Large

Soror Jessica Horne – Undergraduate Member-at-Large



The Newly-elected Illinois State Executive Board

Illinois to date. The Planning Team scheduled a conference focusing on our founding principles of Scholarship, Service, Sisterhood, and Finer Womanhood. Workshop presenters led interactive discussions focused on health; nutrition; sisterhood; Finer Womanhood; financial planning; estate and will planning; and the impor-

begin the 46th Annual Leadership Conference.

The conference chronicled a number of firsts in the state of Illinois and/or the Great Lakes Region.

- The Executive Board's installation ceremony was facilitated by an Undergraduate Soror, Jessica Holden, Undergraduate Representative to the National Nominating Committee;



Sorors Banks-Hayes, Pugh and Byrd

Introducing Omega Pi Zeta

by Soror Kristian Harris, Basileus - Omega Pi Zeta

Immediately following the Illinois State Executive Board

fany Jordan, Candice Bogan, Joanna Goodson, Felisha Par-

All Sorors at the board meeting were invited to attend the

charter members. This inter-



meeting, eight women from the Evanston/North shore area were granted the charter of Omega Pi Zeta. The charter members are Sorors Kristian Harris, Denise Johnson, Tif-

sons, Mira Cole and Michelle Wharton. The ceremony was conducted by Regional Director Soror Michelle Porter Norman and State Director Soror Connie V. Pugh.

ceremony at the conclusion of Executive Board business. A reception directly followed the chartering. The event allowed Sorors to mingle with the newly established chapter

Sorors of Omega Pi Zeta w/ the Illinois State and Great Lakes Regional Directors

action added a level of excitement to the conclusion of the evening.

Illinois Amicae aiming for the Top

by Soror Zenetta Coleman, Illinois State Amicae Coordinator

After an auxiliary Executive Board meeting, the first Amicae business session of the year was held on Saturday, November 9, 2012. There were 13 Amicae members present, representing four of the State's five auxiliaries: Alsip, Carbondale, Chicago, and Markham. In addition to the State Amicae Coordinator, the Amicae had the unique privilege of interacting with the National Co-



Director of Amicae Affairs, Soror Rhonda Eberhardt, as

well as, Regional Amicae Coordinator, Soror Renee Byrd. Both Sorors Eberhardt and Byrd presented workshops designed specifically for the Amicae.

Important outcomes of the business sessions included the establishment of an Amicae scholarship, an ongoing fundraiser and the election or appointment of new officers.

The Amicae Scholarship will be awarded to an active, financial Amicae member who is currently enrolled in an accredited community college or university in the state of Illinois. More information will be distributed by the Scholarship

Committee regarding this new endeavor.

The Amicae Fundraiser this year will be a Great Lakes Regional Hotel Stay raffle. The winner will receive one night's stay at the Sheraton Hotel and Resort, Indianapolis, Indiana during the 2013 Great Lakes Regional Leadership Conference in April. **The raffle will run from December 1, 2012 through March 31, 2013.**

Tickets are \$5.00 each or three tickets for \$10.00. All five state auxiliaries will be selling tickets.



Lastly, Amicae LaVorgis Sturkey (Alsip) was elected to a second term as State President. Jimetta Ware (Markham) was elected to State Second Vice President and Amanda Wiggins (Chicago) will serve as the State Corresponding Secretary.

Amicae Roberta Poindexter and Bobbie Malloy (Alsip) were appointed to the State Recording Secretary and Financial Secretary positions respectively. This new group joins First Vice President, Amica Corene McDaniel (Carbondale), Treasurer, Amica Lynette Williams (Alsip), Parliamentarian, Amica Carolin Harvey (Carbondale) and Amica Geraldine Robinson (Carbondale), Chaplain to round out the 2012-13 Zeta Amicae of Illinois leadership team.



Illuminating Illinois

by Sorors Regina Townsend & Felicia Bohannon

The Public Relations team is very excited and honored at the prospect of enhancing the brand of our sisterhood and grateful for the opportunity that the leadership meeting provided to share our plans with our beloved state. For the occasion, we premiered new state banners, a leadership

meeting design suite, as well as, a state slideshow.

The goals were revealed for the coming year, including an updated and enhanced website, the launch of our social media presence, and the development of a media toolkit that will assist each chapter in the development and promotion of their own marketing materials.

It is our goal to be an accessible and interactive resource, this will give every chapter in the state, the tools required to showcase the very best of who we are as a sorority. We look forward to working with the chapters and highlighting the accomplishments amongst our peers, colleagues, dignitaries, and the communities in which we serve.

"Working in conjunction with the State Public Relations Committee, the newsletter will illuminate the great work and activities of chapters across the state of Illinois."

Victory Centre - Z-HOPE Support

by Sorors Astrid Alfred-Greer & Tranese C. Walker

Z-HOPE Project - Victory Centre of South Chicago

The Illinois State Z-HOPE Coordinators collected 1,752 toiletries and household items and \$530.00 in cash for the senior citizens at Victory Centre of South Chicago. Approximately, 82% of the Sorors, Amicae and

youth auxiliaries participated in



the state-wide service project.

Special acknowledgement to the

youth auxiliary of Tau Psi Zeta Chapter for donating over 200 items and Omega Pi Zeta Chapter for donating 278 items

We were very pleased and thankful that the state of Illinois showed up, showed out and supported a great cause. **THANK YOU!**

Mark Your Calendars!

The Leadership Academy will host the **Winter Workshop Series II** and State Director, Soror Connie Pugh will host the **Basilei and Advisors Retreat** on Saturday, February 2, 2013 at the University of Illinois Urbana Champaign.

The Industrious Indiana State Organization

by Soror Susan D. Johnson, Ph. D.

On October 12th and 13th the State of Indiana held its annual State Leadership conference in Ft. Wayne, IN hosted by Eta Upsilon Zeta and Beta Xi chapters. The conference was a huge success as Sorors from all



Indiana State Director,
Soror Susan D. Johnson, Ph.D.

across the state converged upon the Summit City.

The weekend proved exciting, informational and



Carolyn Gorom

empowering as the conference began with a talent showcase. The event consisted of singers, dancers and spoken word performers.

The next morning, newly appointed State Director Soror Susan Johnson, Ph.D. began the Business Session. The day also consisted of a health fair

and a workout from Fit4U.

The State Z-HOPE project was to collect baby items for a local baby closet. The items were collected and presented to Elaine Williamson and Carolyn Gorom from the local baby closet, who spoke to the ladies of



Indiana Sorors
w/ Elaine Williamson

Zeta about the services they provide to the community.



Indiana State Director,
Soror Susan D. Johnson, Ph.D.



Special Great Lakes historical point of interest...

The Upsilon Kappa Zeta Chapter was recognized by the March of Dimes for raising over \$4,000 last year.

IU Sorority & Fraternity members

Delta Epsilon - Voting Smarter

Begun in September, The Delta Epsilon chapter located on the campus of Indiana University - Bloomington participated in a three part-voting series along with the Delta Sigma Theta and Gamma Phi Omega sororities and Phi Beta Sigma and Kappa Alpha Psi fraternities entitled The Red, White, and Blue Campaign.

They started with registering university students to



vote, twice a week on campus. Then, held an event entitled "Vote Smart,"

which informed students of the candidates' positions on different issues.

Finally, they ended the campaign by hosting an election watch party for the campus.



ReΔ WhΨte & BluΣ

No Vote No Voice
No Vote No Voice
No Vote No Voice



Upsilon Kappa Zeta Chapter Photo 2012

Upsilon Kappa Zeta on the Move

This year Upsilon Kappa Zeta's biggest fundraiser of the year was again, a success. Their annual Caribbean Dinner raises funds for their yearly scholarship. The unique offerings of Jerk Chicken, Curry Goat and Veggies and Rum Cake always bring out the local Bloomington crowd, and this year was no exception.

At the 2012 Indiana State Meeting, Upsilon Kappa Zeta chapter gave a hearty welcome and show

of gratitude and support to Indiana's new State Director, Upsilon

Kappa Zeta made sure that they supported this endeavor by walk-



Upsilon Kappa Zeta at the Indiana State Meeting

Kappa Zeta's immediate past Basileus, Soror Susan Johnson. In October for Breast Cancer Awareness month, Upsilon

ing (with visiting Soror Donisha Reed) through the Bloomington City Streets celebrating Breast Cancer Survivors and bringing attention to the need for research to cure the disease.

Preserving Our Legacy - Zeta Theta Zeta

The Zeta Theta Zeta Chapter of Zeta Phi Beta Sorority, Inc. recently celebrated their Finer Womanhood Observance at The Chateau Banquet Hall. The theme was *"Preserving Our Legacy through Our Youth."* Fourteen young ladies representing middle and high

school and churches, were recognized for their scholarship, exceptional leadership and outstanding service to the community.

They were presented with gifts and a plaque-The Ida B. King Legacy Award, in memory of Ida B. King who

was an outstanding educator in the Gary Public Schools, a national officer and charter member of the local chapter.



Zeta Theta Zeta Chapter

Zeta Phi Beta Sorority, Inc.
Upsilon Omicron Zeta
Presents
ZETA UNPLUGGED:
ON OCTOBER
Saturday, November 10, 2012
Wild Style Wings
123 W. Washington Street
South Bend, IN
7:00 - 10:00 PM

LIVE MUSIC
OPEN MIC
SPOKEN WORD

Cost: Crayons, Markers,
Coloring Books, Doll and Cars,
Car Seats for Babies
Weighing Less than 5lbs.

Items being collected for
Memorial NICU

For More Information
Call 574-904-4925

Upsilon Omicron Zeta Unplugged

The ladies of Upsilon Omicron Zeta did their part to support Prematurity Awareness Month by hosting their 3rd Unplugged: JaZZoetry night. This time, items were collected for the

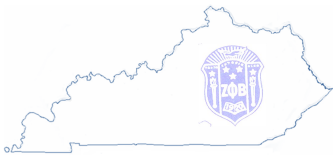
Memorial Hospital Neo-Intensive Care Unit in South Bend, IN. Guest supported the effort by bringing, crayons, markers, activity books, toys, and as well as giving monetary donations. These items were for

the siblings of the children in the NICU so they can have things to do.

The monetary donations allowed the chapter to purchase car seats for infants weighing less than 5lbs.



Soror Keisha D. Smith
Kentucky State Director



The Knock-out Kentucky State Association

by Soror Keisha D. Smith

Greetings Sorors and Amicae!

support the state of Kentucky as

leadership, chapter basilei, Sorors



As the Kentucky State Director, it gives me great pleasure to share key highlights and accomplishments from the Kentucky State Association Collegiate Retreat and Leadership Conference. I am honored that Sorors and Amicae were eager to

well as myself as we had extensive planning for a productive retreat and leadership conference. We have several accomplishments and celebrations, as well as some triumphant Sorors to be recognized. I want to thank the past and current

and Amicae for your support and contributions.

Finally, I want thank our Great Lakes Regional Director and visiting Sorors for supporting me and the State of Kentucky.

A Successful Collegiate Retreat

by Soror Keisha D. Smith

On Friday, November 16, collegiate Sorors from each chapter arrived to Watson Memorial Baptist Church in Louisville to share and learn about our dynamic organization. We had support from Great Lakes Regional Director Soror Michelle Porter Norman, Past Regional Director Soror Ira J. Ebbs, Past State Directors Soror Bobbie Qualls and Soror Margie F. Artis, National Phylacter & Immediate Past State Executive Board Chair, Soror Brun-

hilda Williams-Curington, National Graduate Member-At-Large & Regional Executive Board Chair, Soror Patricia E. Jones, Kentucky State Representative, Soror LaTonda Page, graduate advisors, and graduate Sorors.

During this time, the **Collegiate Chapter Basilei provided chapter highlights** which ranged from effective community service, academic success, political involvement, and

stepshow accomplishments and participation. Mini-workshops were held for **Z-HOPE** (Soror Victoria May), **Protocol** (Soror Isis Phillips), and **Budget and Finance** (Soror Margie F. Artis). We held our **first ever Collegiate Chant Off** which demonstrated another motivating aspect of our collegiate women. Finally, our collegiate women engaged in a **1 on 1 session with our Great Lakes Regional Director.**



Past Great Lakes Regional and Kentucky State Director, Soror Miller delivering the Opening Session Inspirational Message.

The Kentucky State Association Leadership Conference

by Soror Keisha D. Smith



Past State Director Soror Ogburn passing the gavel to new Kentucky State Director Smith.

On Saturday, November 17, 2012 the state conference kicked off with an opening ceremony which included an inspirational message from our Past Great Lakes Regional Director, Soror Lizzie G. Miller. Soror Miller reminded us to keep God at the center and our sisterhood connected. Once Soror Miller concluded her message, as a collec-

tive body, Kentucky Sorors, Amicae, and visiting Sorors stood to sing Happy 85th Birthday to Soror Miller.

Protocol gifts were presented by the Kentucky State Director, Soror Keisha D. Smith and Great Lakes Regional Director, Soror Michelle Porter Norman. Immediate Past Kentucky State Director, Soror Lisa Ogburn

passed the gavel to Kentucky State Director, Soror Keisha D. Smith.

Sorors were extremely supportive of the first ever Necrology/Rededication held at a state conference delivered by Past State Director & State Necrology/Rededication Chair, Soror Bobbie Qualls.

The Kentucky State Association Conference con't

We recognized our triumphant Sorors, Past State Director Soror Avil Harris, Soror Tracy Wheeler, and Soror Catherine LaRue. Workshops were delivered for Chapter Management (Soror Toni Thomas, Past State Director), Parliamentarian Pro-



Presentation to the Baptist East Healthcare Facility

cedures (Soror Brunhilda Williams-Curington), and

Z-HOPE (Soror Victoria May). Business Sessions were held for Zetas and Amicae. Thank you to Soror Cassandra Grigsby,



Rededication/ Necrology

State Amicae Coordinator for working with our Amicae. We received the State of the Region from the Regional Director and the State of the State. The state and local elected and appointed officers did an excellent job fulfilling their roles in

various capacities.

During the Luncheon, we presented Baptist East Healthcare Facility reps, State Z-HOPE Service Project for elderly care, with donated items (i.e. toothbrushes, socks, etc.). Chapters were recognized for submitting chapter reports and we collected change for babies to support March of Dimes. Our traditional Zeta Auction was held and named after the creator, the late Soror Avil Harris. Finally, State Director Smith delivered Membership Intake Certification for Sorors.



Z-HOPE items for the Baptist East Healthcare Facility

A special thank you goes to Pastor Kevin L. Smith and Watson Memorial for allowing us to utilize the multipurpose building.

We are heading to Murray State University for the 2013 Conference which will be hosted by the women of Nu Rho!

Happy 85th Birthday Soror Miller!

In November, our 14th Past Great Lakes Regional Director, Soror Lizzie G. Miller celebrated 85 years of life. Having served as Regional Director from 1980-86 under the administration of our 18th Past Grand Basileus Dr. Edith V. Francis, Soror Miller also served our region as a Kentucky State Director.

The Great Lakes Region & the Kentucky State Association presented Soror Miller with birthday gifts at the State Leadership Conference on November 17, 2012 in Louisville.

God has truly blessed her, and our region is truly blessed to have her. Happy 85th Soror Miller and we wish her many more to come.



*Top and Right: Past & Present Regional Leadership Celebrating Soror Miller's Birthday
Bottom: Sorors singing to Soror Miller*



The Majestic Michigan State Organization

by Soror Elner B. Taylor



Michigan State Director,
Soror Elner B. Taylor

Oh, how quickly the years go by. For forty-five years, the Michigan State Organization has held state meetings. This years'



Past Michigan State and
Regional Director,
Soror Ione Hartley Gibson

conference was held at the Doubletree Hotel in Dearborn, MI, hosted by the Upsilon Theta Zeta Chapter. Nearly 300 Zetas, Amicae, and Youth were in attendance. The conference begin with



Past Michigan State and
Regional Director,
Soror Annye P. Roberts

workshops for Zetas and Amicae on **Conflict Resolution, Parliamentary Procedures and Z-HOPE.** The youth groups gathered and worked on creating beautiful pieces of art.

"It was amazing to see the youth turn colored paper and craft buttons into beautiful pieces of art!"



Past Michigan State Director,
Soror Frances Faithful

The first evening concluded with a forty – fifth (45th) anniversary celebrating and honoring the Michigan State Organization's past State Directors: **Ione Hartley Gibson (deceased), Frances Faithful, Marie Clifton, Annye P. Roberts, Jeffrey P. King, Mary Reid Gray (deceased), Mary Crew Lester, Cassandra Bronson (deceased), and Valeriab Holman.**

The March of Dimes was also recognized for their forty (40) year relationship with Zeta Phi Beta



Past Michigan State Director,
Soror Jeffrey P. King

Sorority, Inc.

On the final day of the conference, the revelry continued with our youth groups leaving for a tour of Ford Field in Detroit. Meanwhile the Amicae



Past Michigan State Director,
Soror Marie Clifton

Auxiliary were engaged in a workshop presented by Rhonda Eberhardt, our National Amicae Co-Director.



Past Michigan State Director,
Soror Mary Reid Gray

During lunch, the League of Women Voters presented valuable information on the voting process and what we can do in

Michigan State Organization Con't

our communities to educate citizens on elections..



Past Michigan State Director, Soror Mary Crew Lester

This years' State Z-HOPE Project was a donation to the Methodist Children's Home in Redford, Michigan. Each chapter brought a donation and a monetary



Past Michigan State Director, Soror Cassandra Bronson

tribute was presented to the facility's director.

According to the surveys, the activities enhanced and inspired each attendee with knowledge to execute programs in their local chapters as well as Regional and National activities. Each conference attendee was motivated to continue to

represent our sorority while displaying our principles of Service, Finer Womanhood, Scholarship and Sisterly Love. It was very exciting to learn more about our history.



Past Michigan State Director, Soror Valeriah Holman

The Michigan State Organization State Conferences are always memorable.



Birch Haven in Idlewild, Michigan

Special Great Lakes historical point of interest...
• From the early 1910's through the mid-1960s, Idlewild was an active year-round community and was visited by well-known entertainers and professionals.

Pictorial Highlights from the Conference



The state of Michigan was honored to have the State Directors of Illinois, Minnesota, Colorado, Wisconsin and Ohio in attendance.



The Beta Omicron Zeta Chapter at the 2012 State Conference

This year's youth theme was "Color Me Beautiful".



The Marvelous Minnesota State Organization

by Soror Bernadette Harrell



Soror Bernadette Harrell
Minnesota State Director

The Minnesota State Organization held its 8th Annual Minnesota

Great Lakes Region Executive Board. Also in attendance were

Graduate Member at-Large come to Minnesota for our confer-



Minnesota State Sorors



Sorors Jones, Harrell and Porter Norman taking time for a photo opp.

State Leadership Conference on October 27, 2012. The site of the conference was the Doubletree by Hilton Hotel in St Louis Park, MN. In attendance were Soror Michelle Porter Norman, the 23rd Great Lakes Regional Director and Soror Patricia Jones, National Graduate Member at-Large. Soror Jones is also Chair of the

Soror Connie Pugh, Illinois State Director and Soror Milika Miller, Wisconsin State Director.

ence. We had for the first time, two State Directors from other states in the Great Lakes Region (IL, WI)

The Minnesota State Organization had a few firsts at this year's conference. For the first time, we had a national elected officer, Soror Patricia Jones, National



Soror Harrell w/ Phi Beta Sigma Brothers Profit Idown and Isaac Ricard

attend our conference, also for the first



Marvelous Minnesota con't

time in six years, we had a Great Lakes Regional Director come to Minnesota for our conference.

Regional Director, Soror Porter Norman brought greetings on the behalf of the Great Lakes Region. Soror Jones brought greetings on behalf of the National Executive Board and the Great Lakes Region Executive Board.

workshops conducted during the conference. Soror Sheir Carter of the Sigma Beta Zeta chapter conducted the workshop on protocol and Soror Theloa Carter, also of the Sigma Beta Zeta chapter conducted the workshop on strategic planning.

Soror Harrell, Minnesota State Director conducted the state's Membership Intake Process (MIP).



Sorors Comer and Light taking their elected officer oath while the Regional Director swears them in.

Soror Garnett was unable to join us. Soror Bernadette Harrell, Minnesota State Director and Soror Fannie Harrell, Chair of the Minnesota State Organization Executive Board, presented a bouquet of roses to

to Soror Charmaine Light, elected the Minnesota State Representative and Keyana Comer elected Undergraduate Mem-

Sorors deep in thought at the Minnesota State Meeting



Brother Isaac Ricard, Minnesota State Director and Brother Profit Idown, International Collegiate Member at Large brought greetings on behalf of *Phi Beta Sigma Fraternity, Incorporated.*

There were three

We had a wonderful luncheon. During the luncheon, our Zeta Doves were recognized. Soror Naomi Carter has been a financially active Zeta for 64 years and Soror Willa Mae Garnett a financial Zeta for 67 years.

Soror Naomi Carter. The Minnesota State Organization had two positions open for elections. The positions were for the Minnesota State Representative and the Undergraduate Member at-Large. Congrats

ber at Large. Soror Michelle Porter Norman, Great Lakes Regional Director did the honor of swearing in the newly elected officers.

The Minnesota State Organization had a very active and productive day.



Soror LaRita MJ Smith,
Ohio State Director

"It was so amazing that we certified over 120 Sorors at this conference"



The Opulent Ohio State Organization

by Soror LaRita MJ Smith

Welcome to the Ohio Corner! As the newest appointee to the position of Ohio State Director, I would like to first take a moment to thank the 24th International Grand Basileus Mary Breaux Wright and the Great Lakes Regional Director Michelle Porter-Norman for allowing me the privilege to serve the wonderful sorors of the State of Ohio! Being the birthplace of two of our Founders [Pearls Myrtle Tyler Faithful and Viola Tyler Goins], Ohio has a significant place in the history of **Zeta Phi Beta Sorority, Incorporated**, and we collectively take that heritage seriously.

In keeping with the 2012 - 2013 Sorority Theme: **Building on the Principles of Zeta While Blazing New Paths**, the Ohio State Organization hosted its 54th Leadership Conference October 19th and 20th. We were privileged to have our esteemed GL Regional Director Soror Michelle Porter Norman in attendance. On

Friday night, it was so amazing that we certified over 120 Sorors at this conference.

Gordon NTZ, Graduate Member At Large
 • Soror Clarissa Smith



Ohio State Director w/ Great Lakes Regional and Illinois State Directors

Saturday was filled with workshops, committee work, and handling the business of Zeta. The entire weekend was a fantastic experience and it could have gone as well as it did without the hard work of the host chapter Sigma Iota Zeta, Reynoldsburg OH. The chapter Basileus, Soror LaVada Washington led her chapter to do a superb job as hostess chapter.

XG, Undergraduate Member At Large
 • Soror Charity Martin-Via GZZ, Epistoleus
 • Soror Nicole Carter-Collins NTZ, Tamias [2nd term]
 • Soror Marcia Dixon SIZ, Nominating Committee Chair.

The Sigma Iota Zeta Chapter of Reynoldsburg really set the bar high, and the Sorors of the Beta Zeta Zeta Chapter of Cincinnati are already working in anticipation for the 55th Leadership Conference in Cincinnati, OH.

Congratulations to the Ohio State Organization's newly elected officers:

- Soror Tamara Manning-

Hope you enjoy the highlights from around Ohio!
 Enjoy!

The Outstanding Amicae of Ohio



Ohio Amicae

The Zeta Amicae Auxiliary of Dayton, OH, Delta Phi Zeta Chapter, hosted the second annual Zeta Amicae Workshop held September 15, 2012, the event was open to Amicae and Friends within the State. The Facilitator was Amica Janice Brown, ZA Ohio State President. The workshop was well attended and informative.

Topics discussed included financial responsibility and protocol. Friends in attendance included Advisor Theolanda Harewood and Ohio State ZA Coordinator Georgette Weatherspoon. Next year's host will be Zeta Amicae of Cleveland, Ohio, Gamma Delta Zeta Chapter. The first Workshop was hosted by Zeta Amicae of Cincinnati, Ohio,

Beta Zeta Zeta Chapter. During the recent Ohio State Leadership Conference, held October 19-20, 2012, the Zeta Amicae of State of Ohio presented two outstanding "Zeta Friend" of Year Awards. Recipients were Friend Bobby Rollins of Beta Zeta Zeta Chapter of Cincinnati, Ohio and Friend

Continued on page 35

Ohio's State Conference Hosts: Sigma Iota Zeta

October 19-20, 2012 the Sigma Iota Zeta (SIZ) chapter of Reynoldsburg, Ohio hosted the 54th Annual Ohio State Organization (OSO) Leadership Conference. Sigma Iota Zeta, a chapter of 22, pulled together with Ohio State Director LaRita MJ Smith to deliver an outstanding conference.

The highlight of the conference was the Ohio Z-HOPE Community Initiative, arranged by State Z-HOPE Coordinator Myrtis Holder and SIZ chapter's Z-HOPE chair, Danita Taylor. Chapters from all over the state of Ohio donated a minimum of 20 items from a WISH LIST to the [Ronald McDonald House Charities of Central Ohio \(RMHC\)](#), located in Columbus, Ohio.

Each year, The RMHC helps nearly 3,000 seriously ill children and their families. The children that reside at the

RMHC are being treated at [Nation-wide Children's Hospital](#) and other hospitals in the Central Ohio area. This Meeting Basic Needs Z-HOPE program was one of the largest at the State level for Ohio, with 15 chapters participating.

Megan Koester and Meredith Harrison, of the [Ronald McDonald House](#), expressed their gratitude with the sheer size of the donation. Koester, also the guest speaker for the Saturday luncheon, encouraged chapters throughout the State to create partnerships with their local Ronald McDonald Houses. Additionally, she thanked the members of Sigma Iota Zeta chapter for its partnership with the Central Ohio Ronald McDonald House.



Sorors of the Sigma Iota Zeta Chapter and the Reynoldsburg Amicae

Led by Soror Lisette Merced, Sigma Iota Zeta Sorors, Amicae, Archonettes, and Amicettes have served several dinners to the families of seriously ill children as well as volunteered at the Annual Hot Chocolate Run 15K/5K to raise funds for the RMHC operations.

Through this generous donation, the Ohio State Organization's Z-HOPE Community Initiative helped Ronald McDonald House make being away from home a little easier for children with illnesses and their families.



"Chapters from all over the state of Ohio donated a minimum of 20 items"



Theolanda Harewood of Delta Phi Zeta Chapter of Dayton, Ohio. The award was developed several years ago by ZA Janice Brown and Betty Connors. Zeta Amicae of Ohio Positions:

- President - [Betty Con-](#)

- [nors](#) (Cincinnati - Beta Zeta Zeta Chapter)
- Vice-President - [Janice Brown](#) (Dayton - Delta Phi Zeta Chapter)
- Treasurer - [Lucy Weather-spoon](#) (Cleveland -Gamma Delta Zeta Chater)

The Outstanding Amicae - con't

- Secretary - [Sally Clemmer](#) (Reynoldsburg - Sigma Iota Chapter)

ZETA AMICAE OF COLUMBUS

Zeta Amicae of Columbus Ohio hosts their annual "Heart & Soul Potluck" at Homeport Gallery in Columbus Ohio.

Zeta's from the Gamma Zeta Zeta Chapter and various member of the community attend in celebration. Proceeds from the "Heart & Soul" Raffle will support a non-traditional scholarship for adult non-degreed women seeking continuing education opportunities.



Soror Milika Z. Miller
Wisconsin State Director



The Wonderful Wisconsin State Organization

by Soror Milika Z. Miller

The 2012 Wisconsin State Meeting was held on November 3, 2012 on the campus of Marquette University in Milwaukee. There were a record 71 Sorors registered for the meeting with all seven Wisconsin chapters represented. The Sorors of

were privileged to have five of its nine past state directors in attendance at the meeting; Sorors Jennine Swafford, Jennifer Wright, Brenda Reed, Theresa Smith and Naomi Carter. It should be noted that Soror Carter holds the honor of

- Create a sense of pride and unity amongst the Sorors of Wisconsin.
- Increase Z-HOPE participation.

These goals are in alignment with those that are coming from the office of



The Wisconsin State Sorors at the 2012 State Meeting

“(My goal is to) create a sense of pride and unity amongst the Sorors of Wisconsin.”

-Soror M. Miller

Special Wisconsin point of interest...

- Soror Miller is the 1st Wisconsin State Director to actually be initiated **IN** the state of Wisconsin.

Wisconsin were also able to host several guests including the National Graduate Member-at Large\Chair of the Great Lakes Regional Board Patricia E. Jones, Great Lakes Regional Director Michelle Porter-Norman, Illinois State Director Connie V. Pugh and Minnesota State Director Bernadette Harrell.

Greetings were brought to the body from the National Executive Board, the Regional Executive Board, Phi Beta Sigma Fraternity, Inc. and the National Pan-Hellenic Council of Milwaukee.

The Sorors of Wisconsin

being the first Wisconsin State Director. It was truly a pleasure to be able to fellowship with these women and get their perspectives on the past, present and future of the state organization.

During the meeting State Director Milika Miller presented her goals for the state of Wisconsin. Those goals are:

- Growing the number of financial members in the state.
- Increasing participation of Sorors on the regional and national levels.

International Grand Basilus Mary Wright. There is a sorority wide goal to increase membership by 10%. Soror Miller charged the State of Wisconsin to reach a total membership of 100, a 20% increase. **THE COMPETITION IS ON!!!!**

Soror Wright’s administration is also reminding Sorors that Z-HOPE is a requirement, not a choice. Soror Miller hopes that increased focus on the program within the state will provide the chapters increased recognition on the regional and possibly national level.

Wonderful Wisconsin con't

There were several changes made to the Wisconsin State Organization's Constitution and By-Laws during the meeting. Sorors were most excited about again being able to strike all references to the State of Minnesota

organization. Most importantly was the election for executive board officers. There were four Sorors elected to serve, all of who are newly elected to their positions, WI State Represent-

new positions. The day ended with Soror Miller providing MIP certification to nearly 30 Sorors.

The Amicae of Milwaukee provided the attendees with a silent auction. The auction was a fundraiser for the

Amicae group and raised an excellent amount of money to support their events for the upcoming months.

Although this year's meeting was consolidated the Sorors of Wisconsin were able to handle the business of the state



(Photo) Front Row (Left to Right) WI State Director Miller, Past Wisconsin State Director Carter, GLR Director Porter-Norman, Past Wisconsin State Director Reed. Back Row (Left to Right) Past Wisconsin State Director Wright, Past Wisconsin State Director Smith, Past Wisconsin State Director Swafford, Past Minnesota State Director Fannie Harrell

from its official document. Soror Harrell thanked the Sorors of Wisconsin for their support. The Wisconsin State Organization wishes its sisters in Minnesota well as they continue to excel as an independent

tative to the Great Lakes Regional Board Jennine Swafford, Chair of Board Toya Jenkins-Glenn, Tamias Mary Collier and Phylacter Vanessa Morgan. We wish these Sorors well as they begin service to the state in their

organization. The state membership is looking forward to a productive year of Scholarship, Sisterhood, Service and Finer Womanhood

Special Wisconsin point of interest...

- The state of Wisconsin has 7 active Stork's Nest.
- 6 are sponsored by the Kappa Beta Zeta Chapter and 1 sponsored by the Sigma Alpha Zeta Chapter

Wisconsin State Organization's Stork's Nest

Stork's Nest is a prenatal education program that encourages women to seek early and regular prenatal care. The mission of Stork's Nest is to reduce infant mortality, pre-term and low weight births, and birth defects in the community. Stork's Nest clients earn points through attending prenatal care classes, prenatal

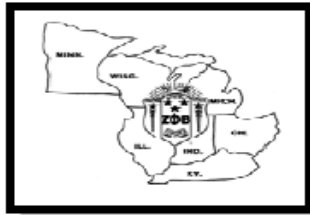
visits with healthcare professionals, and any positive behavior changes that increases the chance of having healthy babies.

There six Stork's Nest sites in the State of Wisconsin: Aurora Sinai Medical Center, Milwaukee, WI Family Care Center, Milwaukee, WI

West Allis Health Department, West Allis, WI Wheaton Franciscan- St. Joseph's, Milwaukee, WI Sixteenth Street Community Health Center, Milwaukee, WI Family Services, Green Bay, WI For more information contact: wistorksnest@gmail.com



REGISTRATION FORM



Zeta Phi Beta Sorority, Incorporated
 79th Great Lakes Regional Leadership Conference
 "Building on the Principles of Zeta While Blazing New Paths"
 Sheraton Indianapolis Hotel at Keystone Crossing
 8787 Keystone Crossing ♦ Indianapolis, IN ♦ 317-846-2700
 April 25 – April 28, 2013

ATTENDEE PERSONAL INFORMATION (please print)

Last Name _____ First Name _____
 Street Address _____
 City _____ State _____ Zip _____
 Evening Phone _____ E-mail Address _____
 Emergency Contact Name and Number _____
 Special meeting accommodation(s) _____ Special meals: Vegetable Plate or Fruit Plate

ATTENDEE STATUS

Chapter Name _____ Chapter Location _____

Please check one:
 Financial
 Un-financial
 Guest

Please check all that apply:
 Past Grand Basileus
 National Officer
 National Appointee
 Regional Officer
 Regional Appointee
 Golden Life Member
 Life Member
 Zeta Dove (Years _____)
 Amicae
 Youth (Age _____)

REGISTRATION PAYMENT

The Processing fee for a refund will equal the cost of the meals on or before April 6, 2013 by written request. Any Registration Form(s) postmarked after Saturday, April 6, 2013 will be returned to the registrant. NO ONSITE.

Postmarked by:	<u>Early Bird Registration</u> 1/1/2013 ~ 2/1/2013	<u>Regular Registration</u> 2/2/2013 ~ 3/15/2013	<u>Late Registration</u> 3/16/2013 ~ 4/6/2013
<input type="checkbox"/> Graduate	\$175	\$195	\$225
<input type="checkbox"/> Undergraduate	\$165	\$165	\$165
<input type="checkbox"/> Amicae	\$175	\$195	\$225
<input type="checkbox"/> Youth	\$125	\$125	\$125

Additional Tickets	No. Tickets		No. Tickets
<input type="checkbox"/> Amicae Breakfast \$35	_____	<input type="checkbox"/> Awards Banquet \$65	_____
<input type="checkbox"/> Life Member Luncheon \$45	_____	<input type="checkbox"/> Undergraduate Luncheon \$45	_____
TOTAL # TICKETS	_____	TOTAL PAYMENT \$	_____

PAYMENT METHOD

Please make your money order, chapter check or cashier's check payable to **Zeta Phi Beta Sorority, Incorporated – Great Lakes Region**. Mail your payment and registration forms to **LaDonna Randle, Regional Tamias-Grammateus, P. O. Box 5002, Chicago, IL 60680**. Hotel reservations may be made by calling 317-846-2700. Please mention conference code **ZPB** for the conference rates (**Deluxe - \$115; Club Level: Single - \$145/Double- \$160, Corner Suite - \$195 per night/plus tax**). The conference workbook will detail the hotel and club level amenities.

Attendee's Signature: _____ Date: _____
 Basileus' Signature: _____ Date: _____

 Date Received: _____ Amount Received \$ _____ Received By: _____

Please mail two (2) copies to the Regional Tamias-Grammateus.

Revised November 2012

BUILDING ON THE PRINCIPLES OF ZETA WHILE BLAZING NEW PATHS



Zeta Phi Beta Sorority, Inc. Great Lakes Region 79th Annual Leadership Conference Youth Auxiliary Permission Slip

I, _____, the parent/legal guardian of _____ hereby give permission for my child to participate in the youth auxiliary activities held in conjunction with Zeta Phi Beta Sorority, Inc. Great Lakes Region (Great Lakes Region) 79th Annual Leadership Conference scheduled for April 25-28, 2013 in Indianapolis, IN.

In consideration for my child being permitted to participate in the youth auxiliary activities, I voluntarily release, waive and discharge Zeta Phi Beta Sorority, Inc., the Great Lakes Region, its members, officers, sponsors, advisors, agents, representatives and employees from all liabilities for any and all actions or causes of action, including but not limited to, personal injury, bodily injury, property damage, and any claim resulting while my child is attending the workshop activities, or participating in the youth auxiliary activities that are part of the 79th Annual Great Lakes Regional Leadership Conference.

I agree to release, hold harmless and indemnify Zeta Phi Beta Sorority, Inc., the Great Lakes Region, its members, officers, sponsors, advisors, agents, representatives and employees from all claims, damages, or other liabilities for injuries to my child which are not the result of gross negligence, intentional neglect, or willful or wanton conduct by its members, officers, sponsors, advisors, agents, representatives and employees.

I hereby grant the Great Lakes Region permission to use the image of my child. Such use may include the display, distribution, publication, transmission, or otherwise use of photographs, images, and/or video taken of my child for use in materials that include, but are not be limited to, printed materials such as brochures and newsletters, videos, and digital images such as those on the Great Lakes Region website. I give unrestricted permission for the Great Lakes Region to use my child's image in print, video and digital media. I agree that the Great Lakes Region may use these images for a variety of purposes and that the Great Lakes Region may use these images without further notifying me. I do understand that the Great Lakes Region will not use my child's last name in conjunction with any video or digital images.

In the event of illness or injury, I consent to all routine and/or emergency medical treatments and/or services prescribed by the attending physician, surgeon or dentist, and to the administration and performance of all examinations, treatments, anesthetics, operations, and other procedures which are deemed necessary or advisable by the attending physician at the scene and/or at the hospital or other medical facility. I agree that I am solely financially responsible for any cost and/or all indebtedness incurred as a result of any emergency and/or routine medical and/or surgical treatment and services prescribed by the attending physician for my child, including all charges not covered by insurance.

I certify that my child is in good physical health, has no special needs and may participate in all of the activities except as noted below.

Child Name: _____ Child Age: _____ Child Auxiliary: _____

Print Parent/Guardian Name: _____ Email: _____

Cell Phone: () _____ () _____

Home Phone: () _____ () _____

Work Phone: () _____ () _____

Signature of Parent/Guardian: _____

Emergency Contact Name: _____ Telephone: _____

List any medical or physical conditions the Sponsoring Chapter should be aware of to assure all participants have a safe and orderly trip:

Condition: _____ Medication: _____ Dosage: _____

Name of Prescribing/Treating Physician: _____

Tel #: _____

Youth Sponsor Name: _____

Youth Sponsor Chapter & State: _____

Youth Sponsor Signature: _____ T-shirt size _____



ZETA PHI BETA SORORITY, INC. GREAT LAKES REGION

2013 Regional Leadership Conference

Indianapolis, IN

April 25 – 28

Conference Theme:

“Building on the Principles of Zeta While Blazing New Paths”

CALL FOR WORKSHOP PROPOSALS



**DO YOU HAVE AN IDEA
FOR A WORKSHOP?
IF SO, PLEASE SUBMIT A
PROPOSAL FOR CONSIDERATION.**

WORKSHOP SPECIFICATIONS:

Length: 1 Hour

Workshops scheduled for: 4/25 Thursday night & 4/26 Friday afternoon

Demographics: Zetas (Grad & UG) & Amicae

Needs: LCD projector, handouts to be copied, etc.

SUBMIT PROPOSAL TO:

Soror Adrienne Turner, Workshop Coordinator

Submission Deadline: March 15, 2013

aturner0891@hotmail.com

312-343-8202

*All workshop presenters must be registered for the conference
at the time of proposal submission.*

Save the Date



ZΦB

79th Annual Great Lakes Regional Leadership Conference

April 25 - 28th, 2013

Sheraton Hotel Indianapolis

At Keystone Crossing

8787 Keystone Crossing

Indianapolis, IN 46240

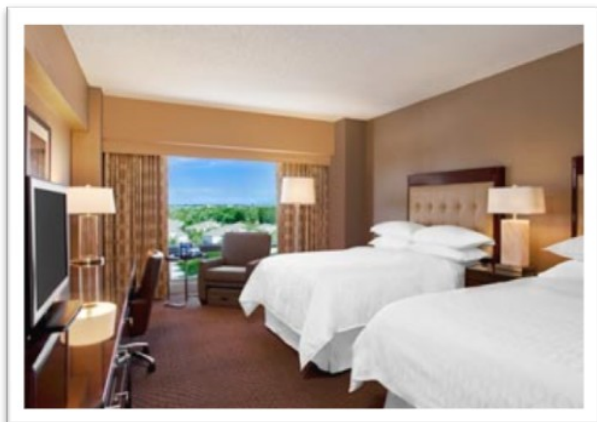
317.846.2700

Host Chapter - Iota Zeta

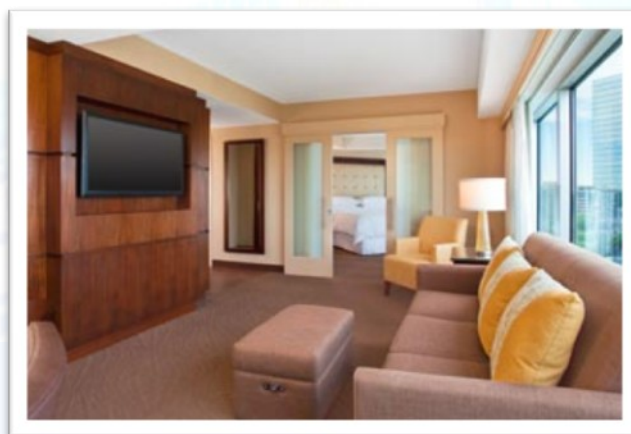
Hotel Accommodations

Sheraton Hotel Indianapolis *8787 Keystone Crossing * Indianapolis, IN * 46240

Rates listed are per night and do not include tax. Individual reservations will be pre-charged for the payment of one night's room & tax. **Cancellation** must be done **24 hours prior to arrival** or you will be charged for one night. There is also an early departure fee of \$50.



**Deluxe Room Rate (Double/Single) -
\$115 + tax**



Corner Suites - \$195 + tax

Amenities:

TV, Internet Access, Parking*, Coffee Maker

Hair Dryer, Iron & Ironing Board

- Complimentary parking is available in the garage located behind the hotel for overnight guests.
- Valet Parking is available at the cost of \$18 per day.

Sheraton Club Level Rooms

Sheraton Club Level amenities include: room located on 12th floor, upgraded amenities, free bottled water; complimentary internet access; access to complimentary breakfast, afternoon hors d'oeuvres and a variety of beverage options daily. A copier, fax & complimentary office supplies are available for your convenience

Club Level Single – \$145 + tax

Club Level Double – \$160 + tax

Club Level Triple – \$175 + tax

Club Level Quad – \$190 + tax

Cutoff Date: April 3, 2013 at 5 p.m. (EST)

Mention: Zeta Phi Beta -Great Lakes Region

Conference Code: ZPB

THANK YOU, THANK YOU, THANK YOU!

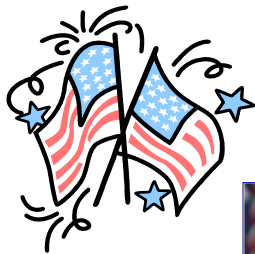
A Regional thank you to the following Sorors for taking the time to submit newsletter names:

Charise Bennett	Rowena Haymer
LaTonya Michelle Griffin	Marion Wallace
Samantha Perry	Tiffany White
Deshanna Taylor	Gwen Miller, Ph.D.
Sam Moore	Janielle Gooden
Jennifer Jones	Fannie Harrell
Jackie Darby	DeAnna Riley

And a HUMONGOUS THANK YOU to Soror Reisha Neely for the Masthead design!

Special thank you to all of the State Conference hosting chapters:

IL - Alpha Alpha - Chicago Metro
IN - Eta Upsilon Zeta/Beta Xi
KY - Kentucky State Association
MI - Upsilon Theta Zeta - Redford
MN - Minnesota State Organization
OH - Sigma Iota Zeta - Reynoldsburg
WI - Lambda Lambda - Milwaukee Metro



CONGRATULATIONS TO ILLINOIS' OWN



I'm so excited about the re-election of President Barack Obama!

PRESIDENT BARACK OBAMA!



Picture of President Obama courtesy of whitehouse.gov